



# KENT COUNTY DIVISION OF PLANNING SERVICES

## *West Clayton Industrial Area*

AS DESIGNATED BY THE 2007 COMPREHENSIVE PLAN

### 2007 AERIAL MAP

#### AREA CHARACTERISTICS:

This industrial area is located on the edge of the town of Clayton; therefore the surrounding area varies greatly in land use. To the west and south, outside of the town, the uses are agricultural and residential with a number of new developments having been recently approved in the area. To the north and east, inside the town, the uses are residential, commercial, and educational.

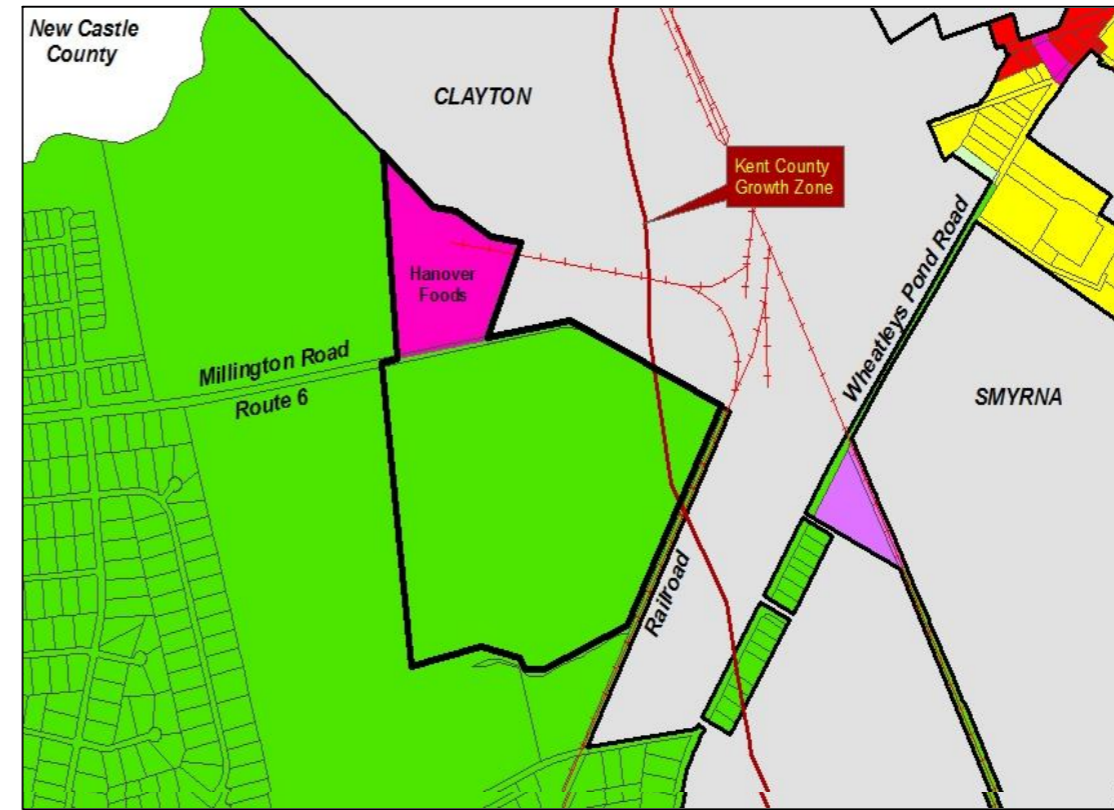
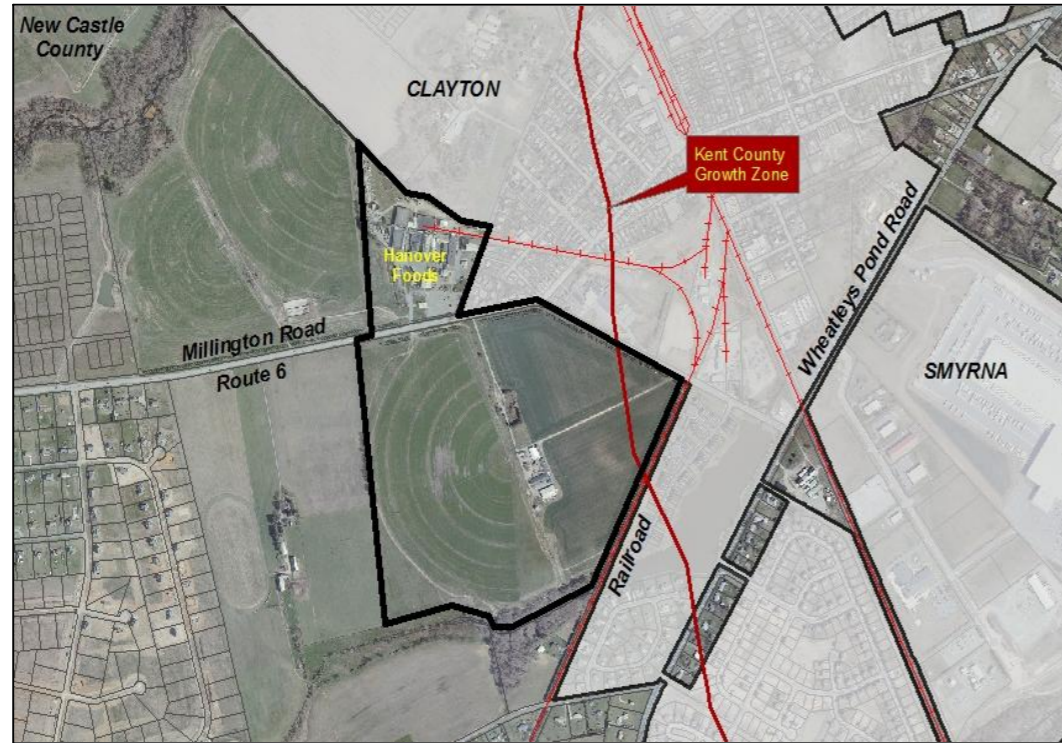
Access to central water and central sewer service. Rail access on the east side of the industrial area. Rt. 6 leads to highway 2 miles east through the towns.

Area currently has Hanover Foods plant (IG zoning) Remainder of area is zoned AC.

#### LANDS IDENTIFIED:

Remainder of area is comprised of one parcel. Property on the south side of Rt. 6 and totals 130 acres owned by Hanover Foods Corp

*For additional Planning procedures please contact The Kent County Department of Planning Services at 302-744-2471*



## WEST CLAYTON INDUSTRIAL AREA

### ZONING CLASSIFICATIONS

- AC
- AR
- RS1
- RMH
- BN
- BG
- IL
- IG

### ENVIRONMENTAL FEATURES MAP

#### Legend

- Potential Industrial Areas
- Parcel Lines
- Railroad
- Roads
- Water Bodies
- Municipalities
- Wetlands
- Floodplain

