

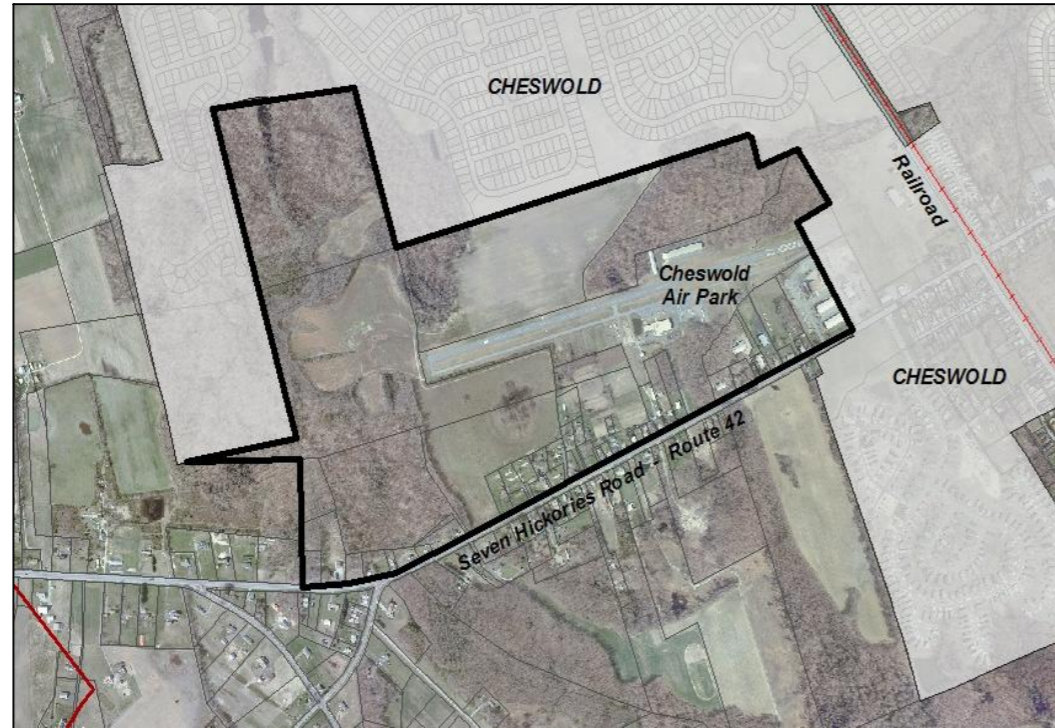


KENT COUNTY DIVISION OF PLANNING SERVICES

West Cheswold Industrial Area

AS DESIGNATED BY THE 2007 COMPREHENSIVE PLAN

2007 AERIAL MAP



AREA

CHARACTERISTICS:

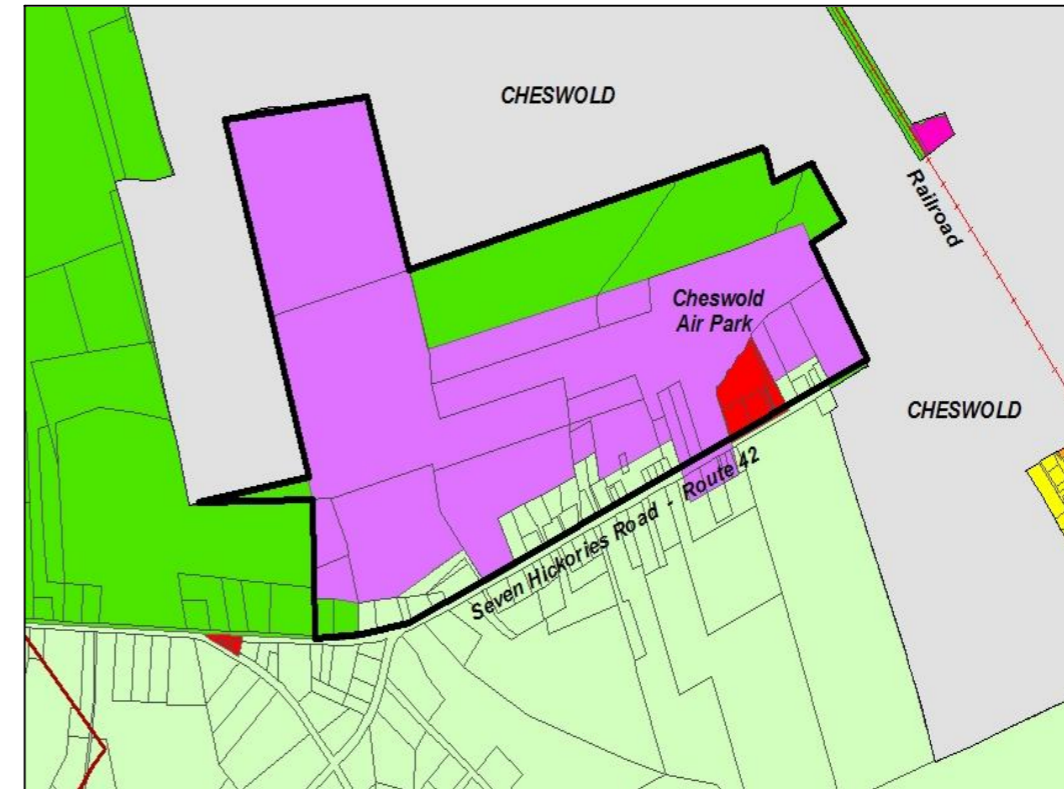
This industrial area is located on the edge of the town of Cheswold. There are some small commercial uses located in the town. The rest of the surrounding area is either residential or agricultural. Access to both central water and central sewer. Within the Kent County Growth Zone Overlay. Both rail and highway to the east in the town of Cheswold, 1,000 feet and 1 mile respectively. Area currently has Cheswold Airport (IL zoning). Remainder of land is zoned IL, BG, AC, and AR. Most of this land is small lot residential growth.

LANDS IDENTIFIED:

100+/- acres zoned AC/IL on the north and west side of the airport. Owned by the State of Delaware and currently unimproved. There may be restrictions because of proximity to airport. Landlocked 40+/- acres of IL zoned land northwest of the airport. Land is unimproved and in private ownership. Two parcels in common private ownership zoned IL and 30 +/- acre in size. Land has frontage on Rt. 42 on the southwestern side of the airport.



For additional Planning procedures please contact The Kent County Department of Planning Services at 302-744-2471



WEST CHESWOLD INDUSTRIAL AREA

ZONING CLASSIFICATIONS

- AC
- AR
- RS1
- RMH
- BN
- BG
- IL
- IG

ENVIRONMENTAL FEATURES MAP

Legend

- Potential Industrial Areas
- Parcel Lines
- Railroad
- Roads
- Water Bodies
- Municipalities
- Wetlands
- Floodplain

