

Pump Station 3 (PS3) Transfer Switch

Significant aspects/risks addressed: Pump Stations

Potential effects if SOP not followed: sanitary sewer overflows, employee health and safety, public health issues

Frequency: Alarm or power failure

Record/Documentation:

Location: PS-3
150 East Water St., Dover, DE 19901

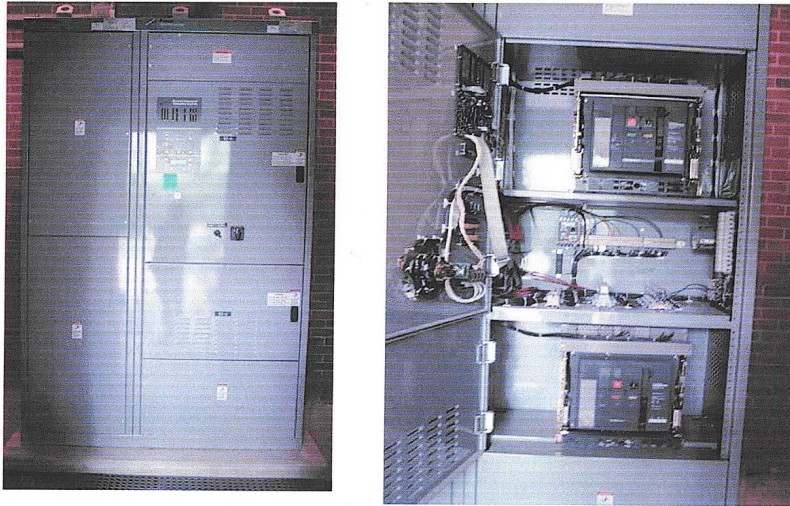
Procedure



P33 EMERGENCY GENERATOR



P83 FILTER SCREEN & DUMPSTER



Evaluate and adjust the following as necessary:

Check pumps, lights and power

Power available but not connected

Check main breaker trip in the rear of the building

Generator running but no pumps running, no lights or power

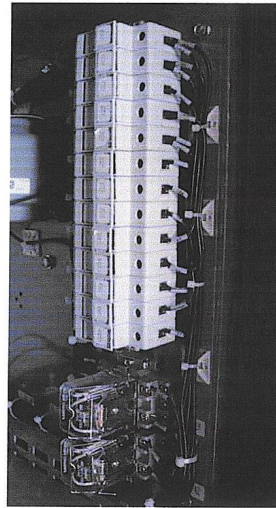
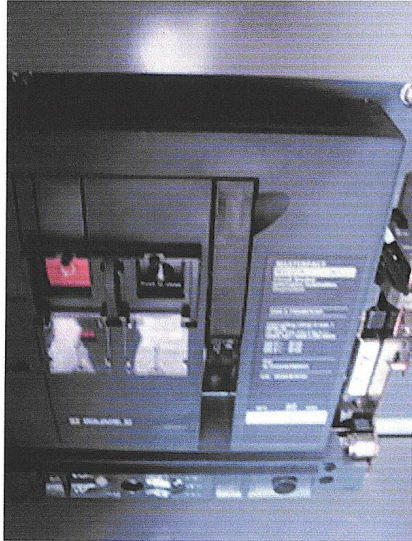
Source 1: Utility not available or not connected

Source 2: Generator available but not connected

Average gauges @ 100%

Low end range: 85%

High end range: 110%



Lift latch:
52-G Generator
52-U Utility

Open: Not used
Closed: Operating
Charged ok: Good
Not charged: Problem

Lift and pull handle (1-4 times)
Until hear or see shut
Push close (above charged button)
Source 1,2 available and connected

Corrective Action Considerations

Changes and/or corrective actions may require approval and verification



PS3 BYPASS PIPING



PS3 BYPASS PIPING TO CONNECT GODWIN PUMPS