

Transferring of power to and from Emergency and normal Power

Significant aspects/risks addressed: Pump station

Consequences of failing to follow procedure: sanitary sewer overflows, public health, employee health and safety

Frequency: As needed for SSO Prevention

Record / Documentation:

Location: (PS4) 55

Locust Grove Rd.,

Camden DE.



When a high level of flow is experienced at PS4 the programming will automatically start the Generator and switch the transfer switch from line power to emergency power and start the #3 400 Hp pump the #2 100 Hp pump will then shut off. The level Set point for this to occur is 75 Inches. If the level continues to rise the #1 400 Hp pump will come on at 90 inches. Once the flow is maintained at 45 inches by the #2 pump the Programming will automatically shut the #1 and #3 Pumps off and the Generator Transfer Switch will switch back to line power and the Generator will go through a cool down cycle and then shut down.

Transferring of power to and from Emergency and normal Power

Frequency: As needed for SSO Prevention

Record / Documentation:

Location: (PS4) 55 Locust Grove Rd., Camden DE.



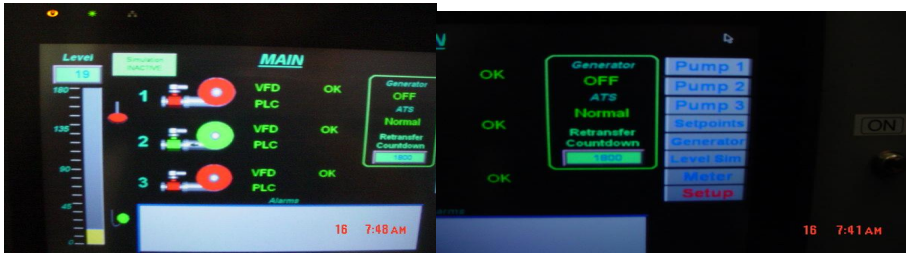
1. When ever the 400Hp pumps are to be used at PS4 they must be ran off of the Emergency Generator. **If for any reason the Generator is out of service the electric company must be notified.**

Transferring of power to and from Emergency and normal Power

Frequency: As needed for SSO Prevention

Record / Documentation:

Location: (PS4) 55 Locust Grove Rd., Camden DE



To switch the generator from Emergency power to Line power

- Enter control room
- Touch LCD screen if black
- Touch the generator box on the right hand side of the screen
- Touch the box that has 12345 a key pad will pop up
- Enter the code 4532 and touch enter
- Touch the LCD switch and it will move to hand
- Check to see if generator starts (visual/hear)
- Transfer switch will transfer(during transfer power will momentarily be interrupted)
- Check to make sure all pumps are online. Pumps may be air bound if so make sure vent lines are open to let air escape from pump.
- To transfer back to generator go through step again and put LCD switch back to auto
- When complete hit the log out button

Opening and closing of valves

Frequency: As needed for SSO Prevention

Record / Documentation:

Location: (PS4) 55 Locust Grove Rd., Camden DE

In the past Pump station 4 received all of the sewage from the northern part of Kent County. With the Central By-pass in place the flow from the north is now by passing the station with the use of Valves. The only flow coming into the station is what comes through the central by-pass Transmission Line. The following must be followed to open and close the valves.

1. If the flow from PS 3 , 14 , 15 and the City of Dover Puncheon Run station must be diverted into PS 4 the wet well valve must be opened and the by pass valve closed . This operation must be done simultaneously.
2. The valves must be completely opened and closed.
3. With the valves switched the programming should take care of transferring the pumps and starting the generator.

