



KENT COUNTY DIVISION OF PLANNING SERVICES

South Farmington Industrial Area

AS DESIGNATED BY THE 2007 COMPREHENSIVE PLAN

2007 AERIAL MAP

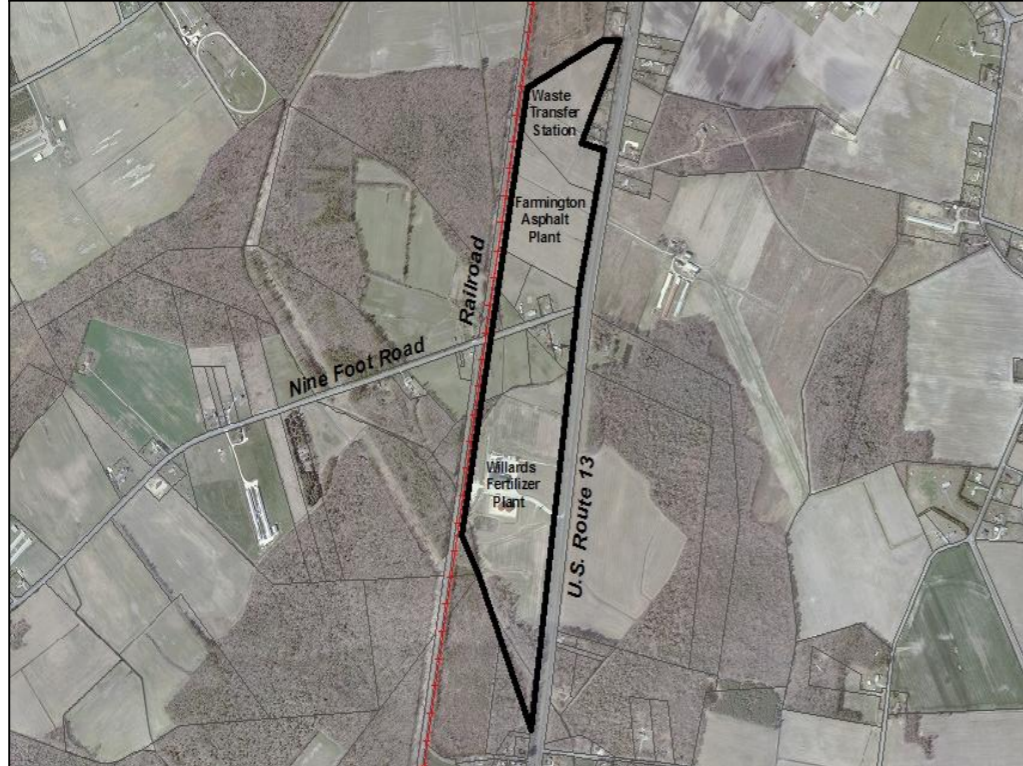
AREA

CHARACTERISTICS:

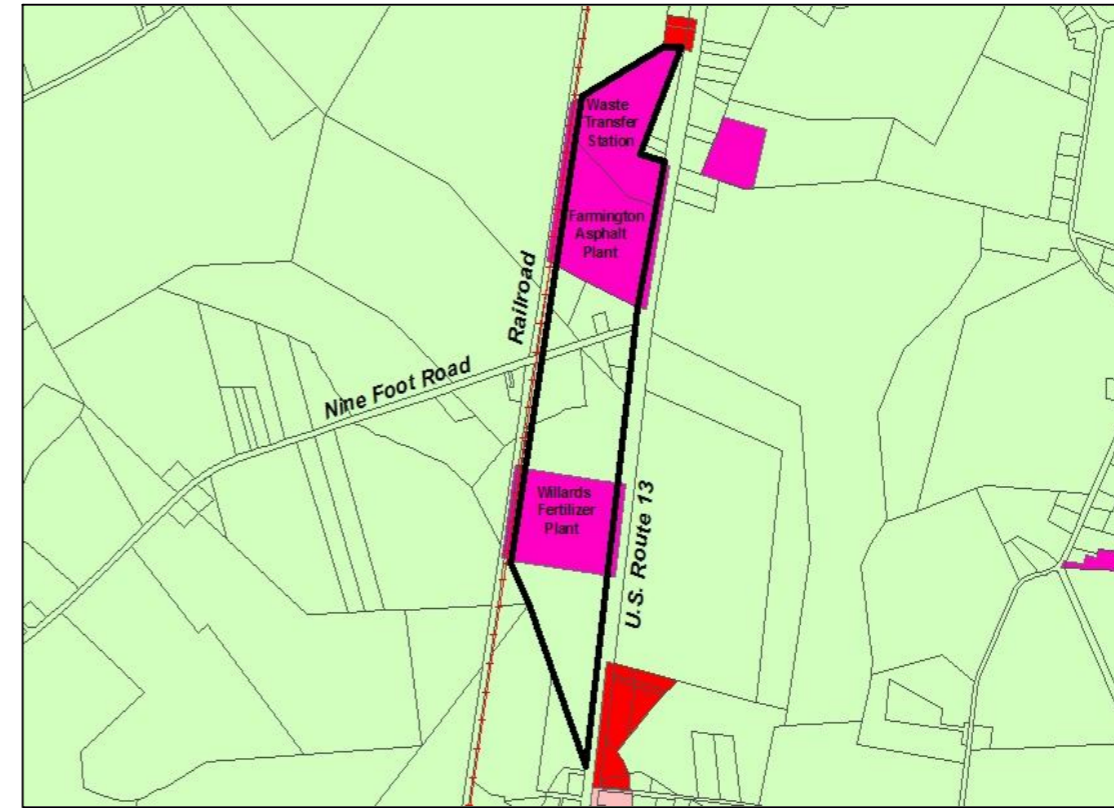
Area located south of the town of Farmington and north of the Kent/Sussex county boundary. Surrounding this industrial area is mainly residential and agricultural ground. Small commercial uses do exist to the north and south along Rt. 13. Immediate access to Rt. 13 on the east and rail access to the west. Area currently has Willards Fertilizer Plant. (IG zoning) Two proposed industrial uses: ESE waste transfer station and Farmington asphalt plant. (IG zoning) The remaining area is zoned AR.

LANDS IDENTIFIED:

- Remainder of the 36 acres on Willard's Fertilizer Plant property is vacant
- Another 13 acres of vacant, privately owned land and 10 acres of residentially improved properties.



For additional Planning procedures please contact The Kent County Department of Planning Services at 302-744-2471



SOUTH FARMINGTON INDUSTRIAL AREA

ZONING CLASSIFICATIONS

- AC
- AR
- RS1
- RMH
- BN
- BG
- IL
- IG

ENVIRONMENTAL FEATURES MAP

Legend

- Potential Industrial Areas
- Parcel Lines
- Railroad
- Roads
- Water Bodies
- Municipalities
- Wetlands
- Floodplain

